

Write your own K8s operator

05.08.2023

Simon Schneider

Simon Schneider

Software Engineer



9:41



Mein E-Bike



0 km entfernt



ROTWILD
R.C750 Ultra



100%
Akkustand



50km
Reichweite



Supportstufen
anpassen

Verbunden

Heute

Letzte Fahrt

Gefahrene Distanz

23 km

Dauer

1h 12m

Ø Geschwindigkeit

12,3 km/h

Verbrannte Kalorien

231 kcal

Alle Fahrten

Gefahrene Distanz

233 km

Dauer

1h 12m



E-Bike

Fahrt starten



Fahrten

9:41



00:00:00

Verbleibende Zeit

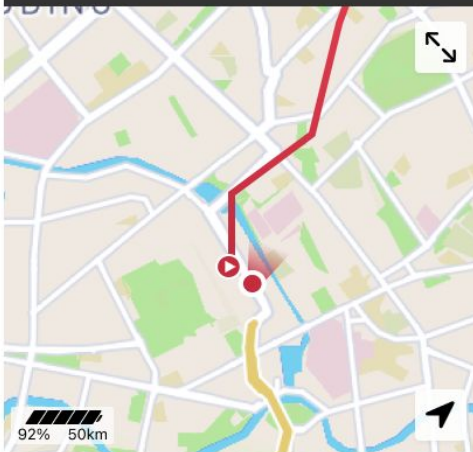
0,0 km

Verbleibende Distanz



300m

Richard-Zanders-Straße, K 27



92%

50km

0 kcal

Verbrannte Kalorien

0,0 km/h

Ø Geschwindigkeit

0 Watt

Eigenleistung

0 Watt

Motorleistung

Fahrt stoppen

9:41



Zurück

Deine Fahrt



Heute 12:03

HBF nach Eigelstein



Distanz

54,5 km

Aktive Zeit

1h 12m

Verbrannte Kalorien

315 kcal

Details zu deiner Fahrt

HÖHENPROFIL



Anstieg

130m

Abstieg

130m

ZUSAMMENFASSUNG

Gesamtzeit

1h 15m

Akku Verbrauch

34%

Ø Geschwindigkeit

23 km/h

Max. Geschwindigkeit

31,2 km/h

- Development around the globe
- Kubernetes for service orchestration
- We ❤️ Infrastructure as Code

Database management with(out) terraform!?

postgresql

Overview

Documentation

USE PROVIDER ▼



postgresql

by: [cyrilgdn](#)

Database

VERSION 🕒 PUBLISHED
1.19.0 **3 months ago**

[<> SOURCE CODE](#)

[🔗 cyrilgdn/terraform-provider-postgresql](#)

Provider Downloads

All versions ▼

Downloads this week **369.502**

Downloads this month **369.502**

Downloads this year **7.8M**

Downloads over all time **27.7M**

- Everything in one place
 - Database configuration is stored in GIT
 - Database configuration can be tested
-
- Terraform needs direct network access to db server
 - Terraform plan takes much time
 - Developers need to learn HCL

DAMN YOU TERRAFORM



Write custom K8s operator

WRITE MORE CODE





<https://github.com/brose-ebike/postgres-operator/>

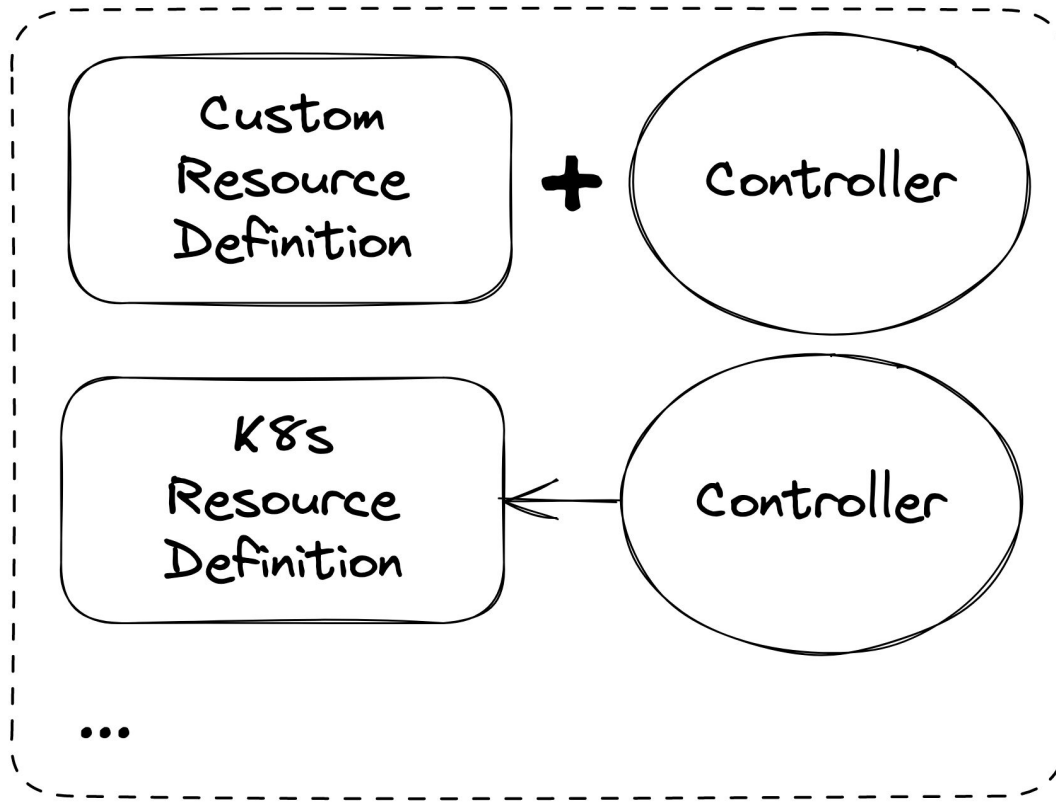
- Database config with application config
- Network access already available
- Known interface for developers

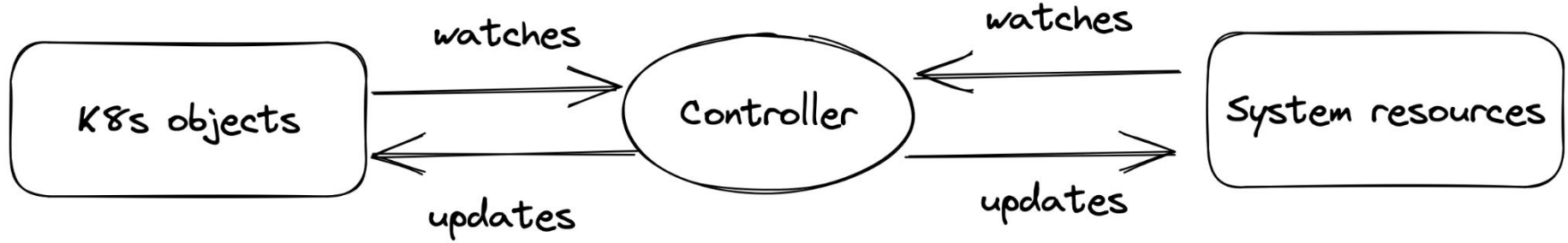
- Terraform needs to inject admin credentials
- Developer user handling
- Operator needs to be maintained

K8s basics

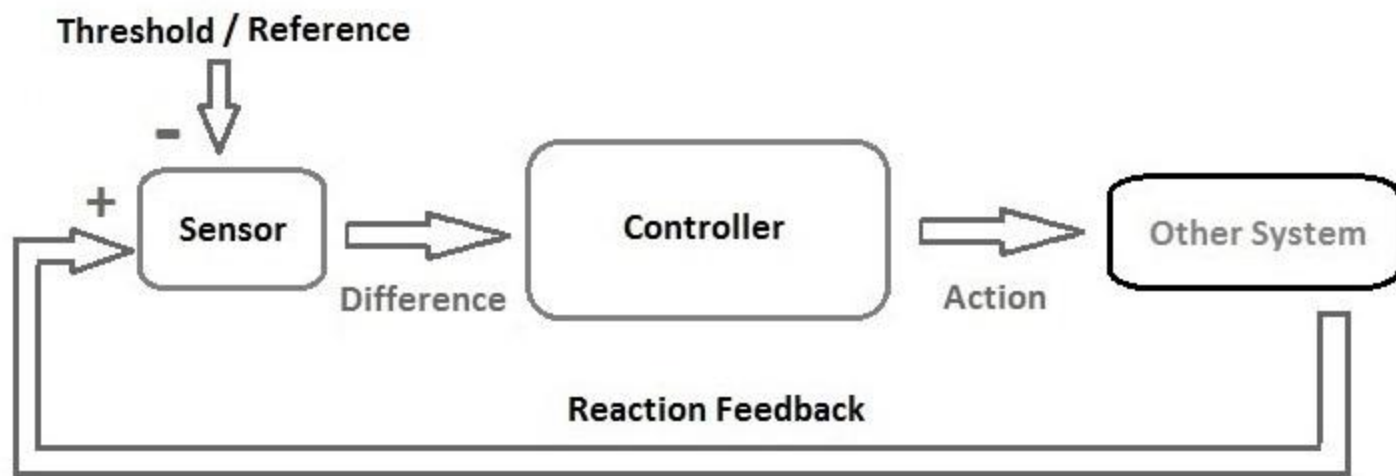
Operator, Controller, etc.

K8s Operator Pattern





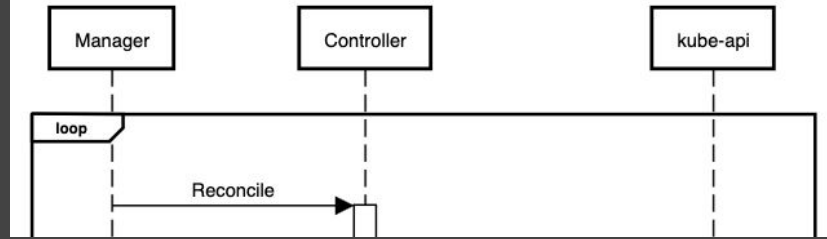
The cybernetics in kubernetes



A Cybernetic Loop



Kubernetes Control Loop





OPERATOR
FRAMEWORK

The Operator Framework is an open source toolkit to manage Kubernetes native applications, called Operators, in an effective, automated, and scalable way.



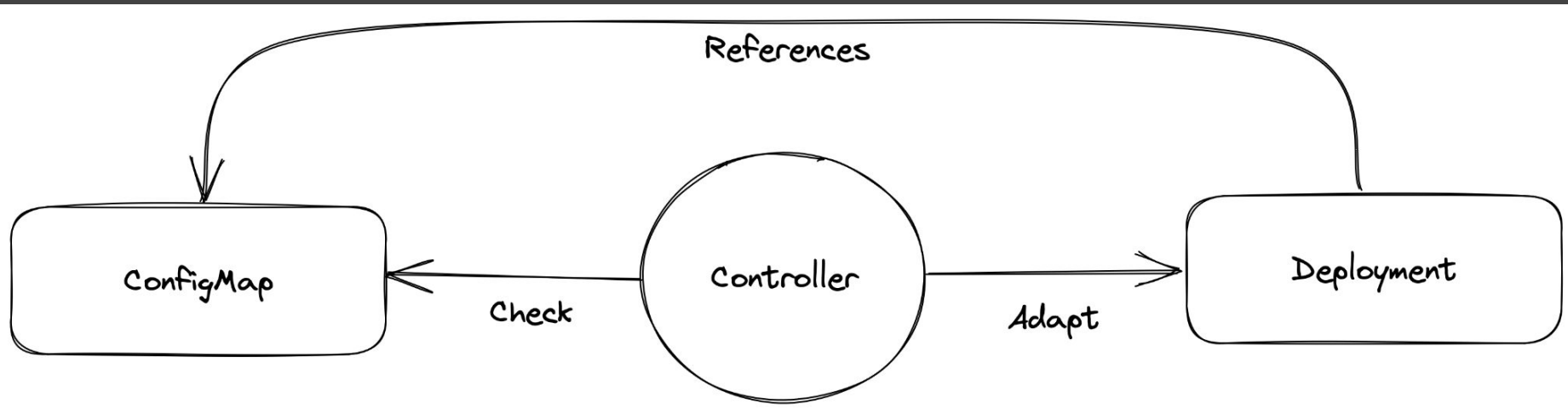
OPERATOR FRAMEWORK

Operator SDK

Operator
Lifecycle
Manager

Coding Session

Let us write our own k8s operator,
which restarts pods of a deployment
when a config map gets changed



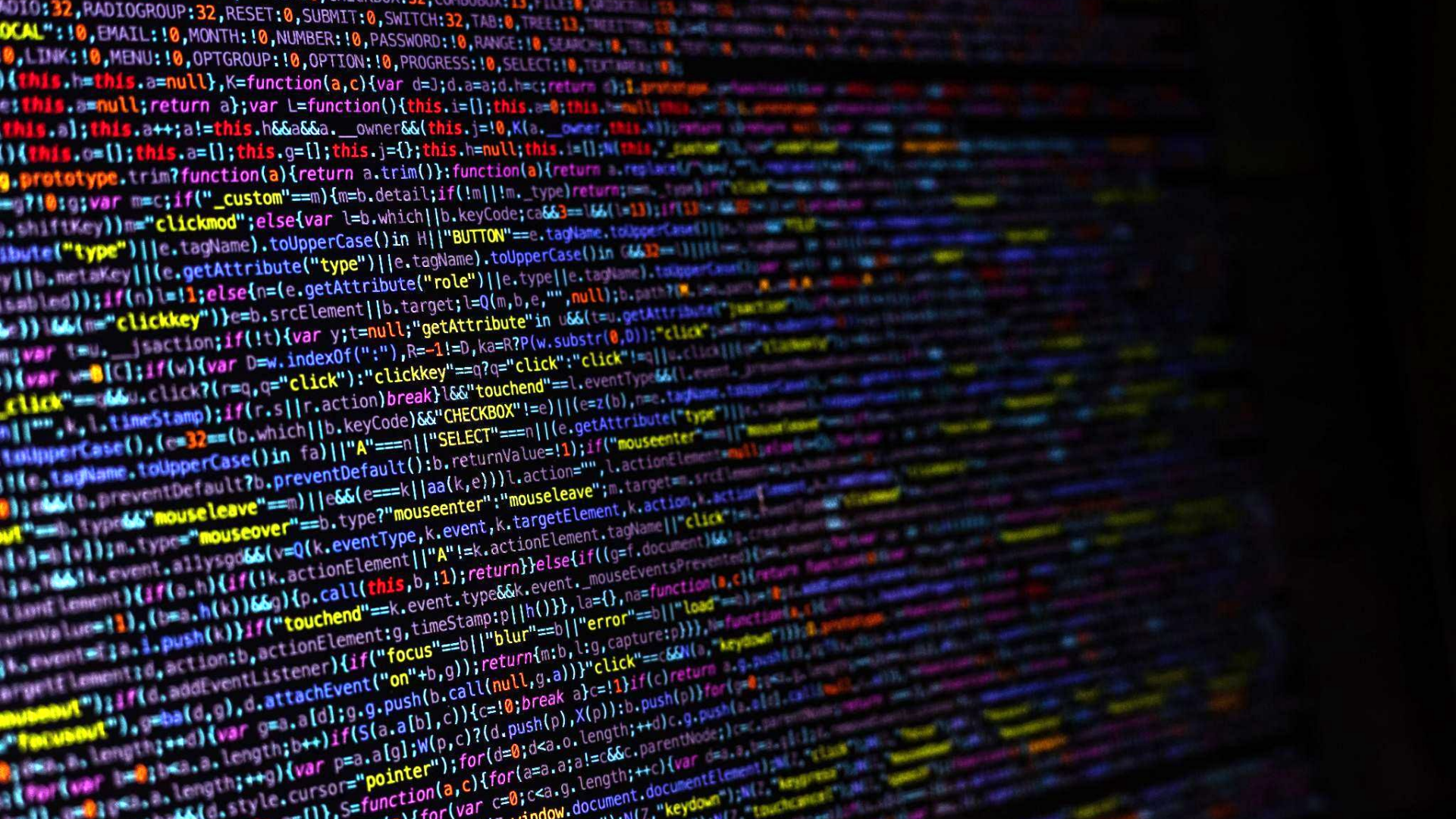
```
mkdir auto-reload-operator
```

```
cd auto-reload-operator
```

```
operator-sdk init --domain raynigon.com  
--repo github.com/raynigon/auto-reload-...
```

```
operator-sdk create api --group=apps  
--version=v1 --kind=Deployment  
--controller=true --resource=false
```

```
operator-sdk create api --group=core  
--version=v1 --kind=ConfigMap  
--controller=true --resource=false
```





<https://github.com/raynigon/auto-reload-operator>

Summary

1. Cybernetic control loop as architecture of k8s controllers
2. What is the operator sdk and how to use it
3. Start writing your own k8s operator today

Questions



Thank you



We are hiring!



[simon-schneider-nbg](#)



[raynigon](#)



simon.schneider@brose.com

Image References

- Brose Logo: <https://static.brose.bike/images/generic/brose-logo.png>
- Screenshot Brose Apps: <https://apps.apple.com/de/app/brose-e-bike-app/id1571894256>
- Memes from imgflip.com
- Diagramm Cybernetic Loop: <https://en.wikipedia.org/wiki/Cybernetics#/media/File:Cybernetics.jpg>
- Thermostat: https://de.wikipedia.org/wiki/Thermostatventil#/media/Datei:AVM_FRITZ!DECT_301-8942.jpg
- Logo Operatorframework: <https://operatorframework.io/>
- Code Wallpaper: Mitchell Luo https://unsplash.com/de/fotos/FWoq_IdWINQ
- Diagrams were drawn with:
 - <https://excalidraw.com/>
 - <https://sequencediagram.org/>